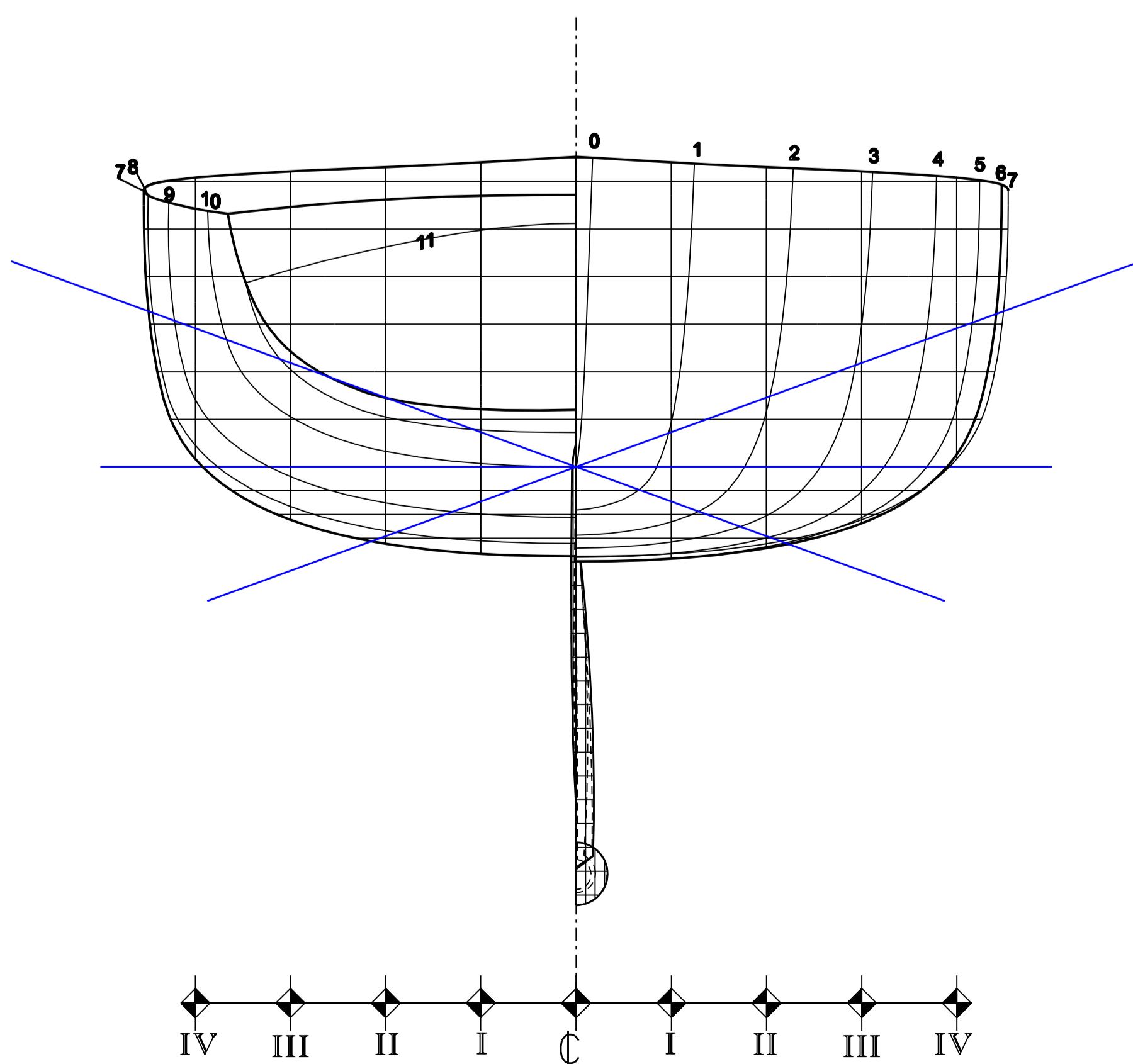
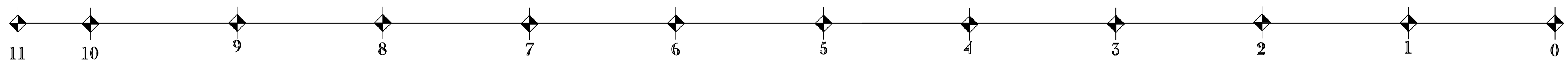
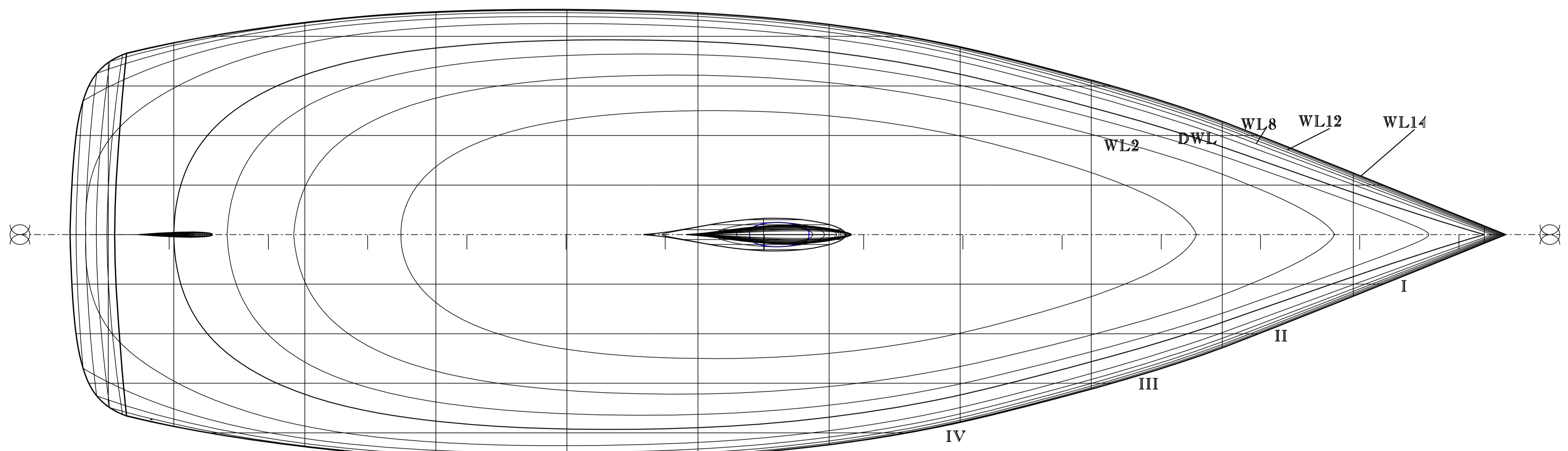


LWL	13.11 m
BWL	3.9 m
Volume	11500 L
Displacement	11800 Kg
Flotation LCB (% WL)	56 %
Waterplane LCF (% WL)	58.2 %
Prismatic Coeff.	0.595
Waterplane Coeff.	0.715



UNIVERSITA' DEGLI STUDI DI GENOVA	
SCUOLA DIRETTA A FINI SPECIALI IN PROGETTAZIONE PER LA NAUTICA DA DIPIORTO	
DOCENTI: Arch. Garroni Vittorio Arch. Musio Sale M. Arch. Zignego I.	Composizione Nautica 3 Principi di Design 2 Arredamento Navale
STUDENTE: Stich Marcus	PROGETTO: Crociera Veloce 14.5 m
PIANO DI COSTRUZIONE	
L=14.45m B=4.54m T=2.3m (0.5m)	SCALA 1 : 25
TAVOLA N. 3	